



EVEN $\frac{6}{8}$
 $\text{♩} \approx 120$

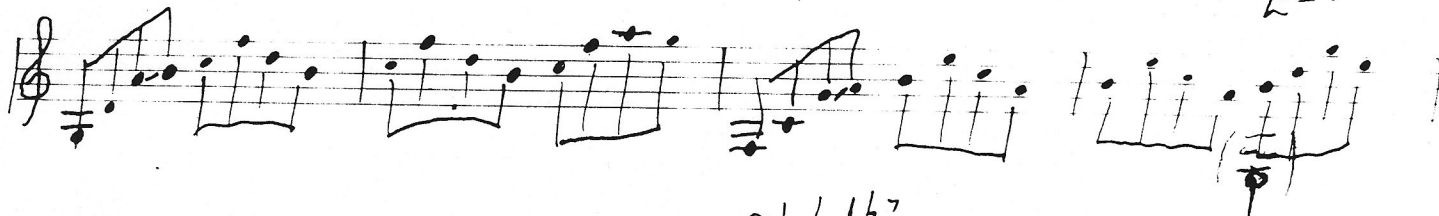
A-7



G⁷

F^M7

E-7



A-7

B^b lyd. b⁷



A-M⁷

E⁷ #9 *



* E⁷ #9 use E altered 4 5

(C Harmonic Major)

C D E F G A^b B C
 1 2 3 4 5 6 7 1