

Level V
- Major Scale Chord Cycles -

Cycle 3 *descending* (two common tones)

C Em G B^o Dm F Am C

Cycle 6 *ascending* (two common tones)

C Am F Dm B^o G Em C

Cycle 5 *descending* (one common tone)

C G Dm Am Em B^o F C

Cycle 4 *ascending* (one common tone)

C F B^o Em Am Dm G C

Cycle 2 *descending or parallel ascending* (no common tones)

C Dm Em F G Am B^o C

Cycle 7 *ascending or parallel descending* (no common tones)

C B^o Am G F Em Dm C

Level VI
- Melodic Minor Scale Chord Cycles -

Cycle 3 *descending* (two common tones)

Cm Eb+ G B[°] Dm F A[°] Cm

Cycle 6 *ascending* (two common tones)

Cm A[°] F Dm B[°] G Eb+ Cm

Cycle 5 *descending* (one common tone)

Cm G Dm A[°] Eb+ B[°] F Cm

Cycle 4 *ascending* (one common tone)

Cm F B[°] Eb+ A[°] Dm G Cm

Cycle 2 *descending or parallel ascending* (no common tones)

Cm Dm Eb+ F G A[°] B[°] Cm

Cycle 7 *ascending or parallel descending* (no common tones)

Cm B[°] A[°] G F Eb+ Dm Cm

Level VII
- Harmonic Minor Scale Chord Cycles -

Cycle 3 *descending* (two common tones)

Cm Eb+ G B[°] D[°] Fm Ab Cm

Cycle 6 *ascending* (two common tones)

Cm Ab Fm D[°] B[°] G Eb+ Cm

Cycle 5 *descending* (one common tone)

Cm G D[°] Ab Eb+ B[°] Fm Cm

Cycle 4 *ascending* (one common tone)

Cm Fm B[°] Eb+ Ab D[°] G Cm

Cycle 2 *descending or parallel ascending* (no common tones)

Cm D[°] Eb+ Fm G Ab B[°] Cm

Cycle 7 *ascending or parallel descending* (no common tones)

Cm B[°] Ab G Fm Eb+ D[°] Cm

Triad/Close Voicings/ Cycle 2: C major

Root Position

C Dmi Emi F G Ami Bo C

1

Second Inversion

C Dmi Emi F G Ami Bo C

2

First Inversion

C Dmi Emi F G Ami Bo C

3

Triad/Spread Voicings/ Cycle 2: C major

Root Position

C Dmi Emi F G Ami Bo C

4

Second Inversion

C Dmi Emi F G Ami Bo C

5

First Inversion

C Dmi Emi F G Ami Bo C

6

Triad/Close Voicings/ Cycle 2: C major--Also acceptable

Root Position

C Dmi Emi F G Ami Bo C

Second Inversion

C Dmi Emi F G Ami Bo C

First Inversion

C Dmi Emi F G Ami Bo C

Triad/Spread Voicings/ Cycle 2: C major--Also acceptable

Root Position

C Dmi Emi F G Ami Bo C

Second Inversion

C Dmi Emi F G Ami Bo C

First Inversion

C Dmi Emi F G Ami Bo C

Triad/Close Voicings/ Cycle 4: C major

Root Position

C F Bo E^{mi} A^{mi} D^{mi} G C

1

A musical staff in treble clef showing the close voicings for the Root Position triads of the C major cycle. The notes are: C (C4, E4, G4), F (F4, A4, C5), Bo (B3, D4, F4), E^{mi} (E3, G3, B3), A^{mi} (A2, C3, E3), D^{mi} (D2, F2, A2), G (G2, B2, D3), and C (C3, E3, G3).

Second Inversion

C F Bo E^{mi} A^{mi} D^{mi} G C

2

A musical staff in treble clef showing the close voicings for the Second Inversion triads of the C major cycle. The notes are: C (E3, G3, C4), F (A2, C3, F4), Bo (B2, D3, F4), E^{mi} (E2, G2, B3), A^{mi} (A1, C2, E3), D^{mi} (D1, F2, A2), G (G1, B1, D2), and C (C2, E2, G2).

First Inversion

C F Bo E^{mi} A^{mi} D^{mi} G C

3

A musical staff in treble clef showing the close voicings for the First Inversion triads of the C major cycle. The notes are: C (C3, E3, G3), F (F3, A3, C4), Bo (B3, D4, F4), E^{mi} (E3, G3, B3), A^{mi} (A3, C4, E4), D^{mi} (D3, F3, A3), G (G3, B3, D4), and C (C4, E4, G4).

Triad/Spread Voicings/ Cycle 4: C major

Root Position

C F Bo E^{mi} A^{mi} D^{mi} G C

4

A musical staff in treble clef showing the spread voicings for the Root Position triads of the C major cycle. The notes are: C (C4, E4, G4), F (F4, A4, C5), Bo (B3, D4, F4), E^{mi} (E3, G3, B3), A^{mi} (A3, C4, E4), D^{mi} (D3, F3, A3), G (G3, B3, D4), and C (C4, E4, G4).

Second Inversion

C F Bo E^{mi} A^{mi} D^{mi} G C

5

A musical staff in treble clef showing the spread voicings for the Second Inversion triads of the C major cycle. The notes are: C (E3, G3, C4), F (A2, C3, F4), Bo (B2, D3, F4), E^{mi} (E2, G2, B3), A^{mi} (A1, C2, E3), D^{mi} (D1, F2, A2), G (G1, B1, D2), and C (C2, E2, G2).

First Inversion

C F Bo E^{mi} A^{mi} D^{mi} G C

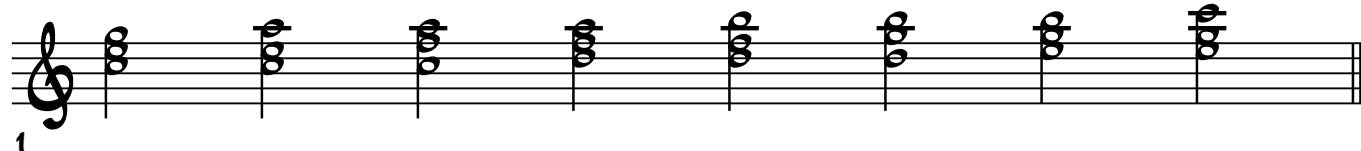
6

A musical staff in treble clef showing the spread voicings for the First Inversion triads of the C major cycle. The notes are: C (C3, E3, G3), F (F3, A3, C4), Bo (B3, D4, F4), E^{mi} (E3, G3, B3), A^{mi} (A3, C4, E4), D^{mi} (D3, F3, A3), G (G3, B3, D4), and C (C4, E4, G4).

Triad/Close Voicings/ Cycle 6: C major

Root Position

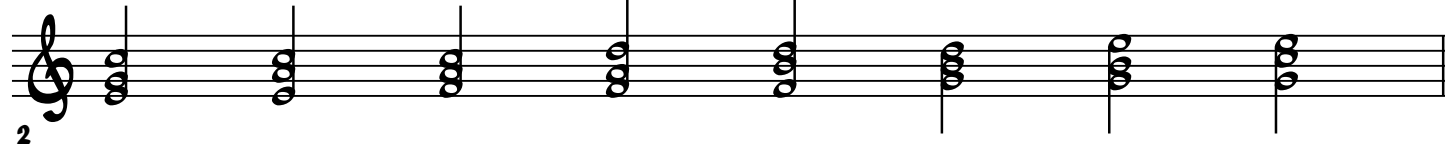
C Ami F Dmi Bo G Emi C



1

First Inversion

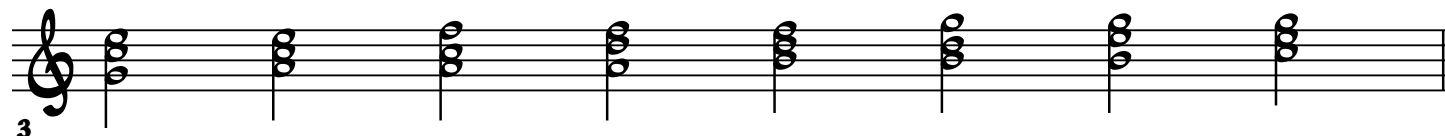
C Ami F Dmi Bo G Emi C



2

Second Inversion

C Ami F Dmi Bo G Emi C

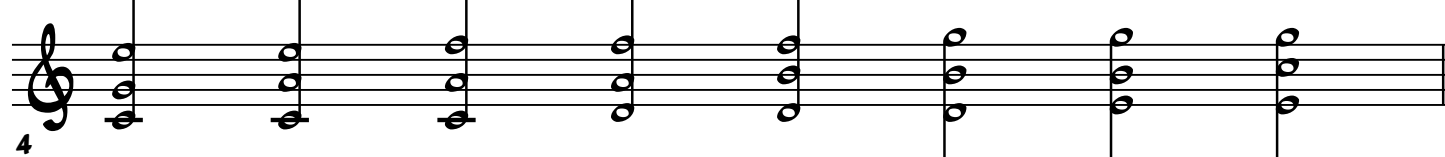


3

Triad/Spread Voicings/ Cycle 6: C major

Root Position

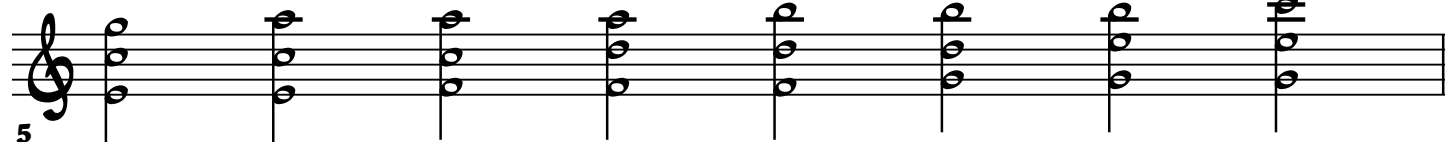
C Ami F Dmi Bo G Emi C



4

First Inversion

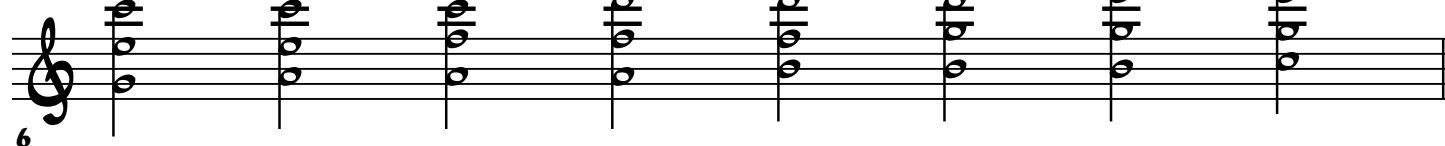
C Ami F Dmi Bo G Emi C



5

Second Inversion

C Ami F Dmi Bo G Emi C



6

Triad/Close Voicings/ Cycle 7: C major

Root Position

C B^o A^{mi} G F E^{mi} D^{mi} C

1

First Inversion

C B^o A^{mi} G F E^{mi} D^{mi} C

2

Second Inversion

C B^o A^{mi} G F E^{mi} D^{mi} C

3

Triad/Spread Voicings/ Cycle 7: C major

Root Position

C B^o A^{mi} G F E^{mi} D^{mi} C

4

First Inversion

C B^o A^{mi} G F E^{mi} D^{mi} C

5

Second Inversion

C B^o A^{mi} G F E^{mi} D^{mi} C

6

Triad/Close Voicings/ Cycle 7: C major--Also acceptable

Root Position

C B^o A^{mi} G F E^{mi} D^{mi} C

1

First Inversion

C B^o A^{mi} G F E^{mi} D^{mi} C

2

Second Inversion

C B^o A^{mi} G F E^{mi} D^{mi} C

3

Triad/Spread Voicings/ Cycle 7: C major--Also acceptable

Root Position

C B^o A^{mi} G F E^{mi} D^{mi} C

4

First Inversion

C B^o A^{mi} G F E^{mi} D^{mi} C

5

Second Inversion

C B^o A^{mi} G F E^{mi} D^{mi} C

6

Triad/Close Voicings/ Cycle 5: C major

Root Position

C G Dmi Ami Emi Bo F C

1

First Inversion

C G Dmi Ami Emi Bo F C

2

Second Inversion

C G Dmi Ami Emi Bo F C

3

Triad/Spread Voicings/ Cycle 5: C major

Root Position

C G Dmi Ami Emi Bo F C

4

First Inversion

C G Dmi Ami Emi Bo F C

5

Second Inversion

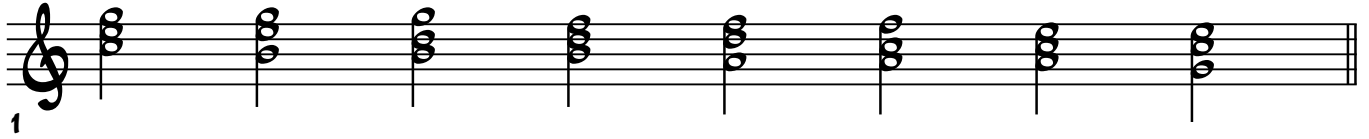
C G Dmi Ami Emi Bo F C

6

Triad/Close Voicings/ Cycle 3: C major

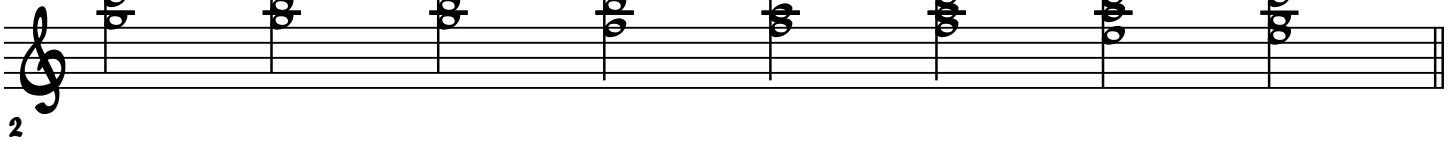
Root Position

C Emi G Bo Dmi F Ami C



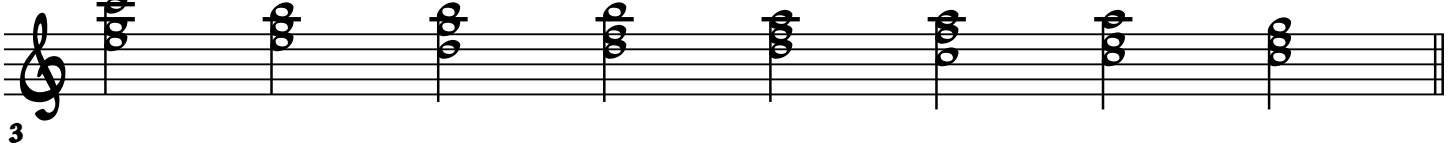
Second Inversion

C Emi G Bo Dmi F Ami C



First Inversion

C Emi G Bo Dmi F Ami C



Triad/Spread Voicings/ Cycle 3: C major

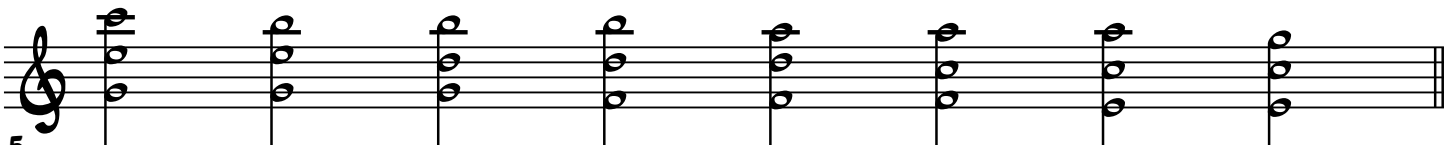
Root Position

C Emi G Bo Dmi F Ami C



Second Inversion

C Emi G Bo Dmi F Ami C



First Inversion

C Emi G Bo Dmi F Ami C



Triad/Close Voicings/ Cycle 2: C melodic minor

Root Position

Cmi Dmi E^baug F G A^o B^o Cmi

1

Second Inversion

Cmi Dmi E^baug F G A^o B^o Cmi

2

First Inversion

Cmi Dmi E^baug F G A^o B^o Cmi

3

Triad/Spread Voicings/ Cycle 2: C melodic minor

Root Position

Cmi Dmi E^baug F G A^o B^o Cmi

4

Second Inversion

Cmi Dmi E^baug F G A^o B^o Cmi

5

First Inversion

Cmi Dmi E^baug F G A^o B^o Cmi

6

Triad/Close Voicings/ Cycle 2: C melodic minor--Also acceptable

Root Position

Cmi Dmi E^baug F G A^o B^o Cmi

1

Second Inversion

Cmi Dmi E^baug F G A^o B^o Cmi

2

First Inversion

Cmi Dmi E^baug F G A^o B^o Cmi

3

Triad/Spread Voicings/ Cycle 2: C melodic minor--Also acceptable

Root Position

Cmi Dmi E^baug F G A^o B^o Cmi

4

Second Inversion

Cmi Dmi E^baug F G A^o B^o Cmi

5

First Inversion

Cmi Dmi E^baug F G A^o B^o Cmi

6

Triad/Close Voicings/ Cycle 4: C melodic minor

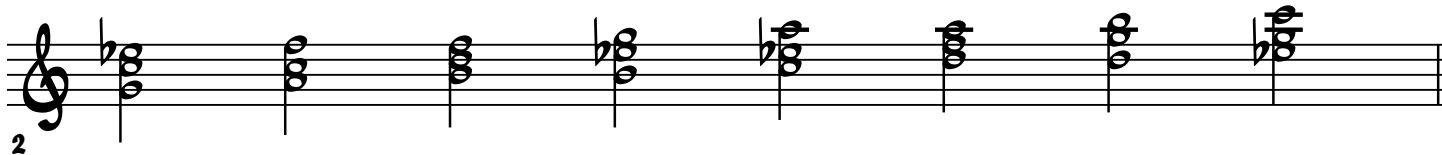
Root Position

Cmi F Bo Ebaug Ao Dmi G Cmi



Second Inversion

Cmi F Bo Ebaug Ao Dmi G Cmi



First Inversion

Cmi F Bo Ebaug Ao Dmi G Cmi



Root Position Triad/Spread Voicings/ Cycle 4: C melodic minor

Root Position

Cmi F Bo Ebaug Ao Dmi G Cmi



Second Inversion

Cmi F Bo Ebaug Ao Dmi G Cmi



First Inversion

Cmi F Bo Ebaug Ao Dmi G Cmi



Triad/Close Voicings/ Cycle 6: C melodic minor

Root Position

Cmi Ao F Dmi Bo G Ebaug Cmi

First Inversion

Cmi Ao F Dmi Bo G Ebaug Cmi

Second Inversion

Cmi Ao F Dmi Bo G Ebaug Cmi

Root Position

Cmi Ao F Dmi Bo G Ebaug Cmi

First Inversion

Cmi Ao F Dmi Bo G Ebaug Cmi

Second Inversion

Cmi Ao F Dmi Bo G Ebaug Cmi

Triad/Close Voicings/ Cycle 7: C melodic minor

Root Position

Cmi Bo Ao G F E^baug Dmi Cmi

Musical notation for Root Position triads. The staff shows the following chords: Cmi (C4, E4, G4), Bo (B3, D4, F4), Ao (A3, C4, E4), G (G3, B3, D4), F (F3, A3, C4), E^baug (E3, G3, B3), Dmi (D3, F3, A3), and Cmi (C3, E3, G3). The key signature has one flat (Bb).

First Inversion

Cmi Bo Ao G F E^baug Dmi Cmi

Musical notation for First Inversion triads. The staff shows the following chords: Cmi (E4, G4, C5), Bo (B3, D4, F4), Ao (A3, C4, E4), G (G3, B3, D4), F (F3, A3, C4), E^baug (E3, G3, B3), Dmi (D3, F3, A3), and Cmi (E3, G3, C4). The key signature has one flat (Bb).

Second Inversion

Cmi Bo Ao G F E^baug Dmi Cmi

Musical notation for Second Inversion triads. The staff shows the following chords: Cmi (G4, C5, E5), Bo (B3, D4, F4), Ao (A3, C4, E4), G (G3, B3, D4), F (F3, A3, C4), E^baug (E3, G3, B3), Dmi (D3, F3, A3), and Cmi (G3, C4, E4). The key signature has one flat (Bb).

Triad/Spread Voicings/ Cycle 7: C melodic minor

Root Position

Cmi Bo Ao G F E^baug Dmi Cmi

Musical notation for Root Position spread voicings. The staff shows the following chords: Cmi (C4, E4, G4), Bo (B3, D4, F4), Ao (A3, C4, E4), G (G3, B3, D4), F (F3, A3, C4), E^baug (E3, G3, B3), Dmi (D3, F3, A3), and Cmi (C3, E3, G3). The key signature has one flat (Bb).

First Inversion

Cmi Bo Ao G F E^baug Dmi Cmi

Musical notation for First Inversion spread voicings. The staff shows the following chords: Cmi (E4, G4, C5), Bo (B3, D4, F4), Ao (A3, C4, E4), G (G3, B3, D4), F (F3, A3, C4), E^baug (E3, G3, B3), Dmi (D3, F3, A3), and Cmi (E3, G3, C4). The key signature has one flat (Bb).

Second Inversion

Cmi Bo Ao G F E^baug Dmi Cmi

Musical notation for Second Inversion spread voicings. The staff shows the following chords: Cmi (G4, C5, E5), Bo (B3, D4, F4), Ao (A3, C4, E4), G (G3, B3, D4), F (F3, A3, C4), E^baug (E3, G3, B3), Dmi (D3, F3, A3), and Cmi (G3, C4, E4). The key signature has one flat (Bb).

Triad/Close Voicings/ Cycle 7: C melodic minor--Also acceptable

Root Position

Cmi B^o A^o G F E^baug Dmi Cmi

1

First Inversion

Cmi B^o A^o G F E^baug Dmi Cmi

2

Second Inversion

Cmi B^o A^o G F E^baug Dmi Cmi

3

Triad/Spread Voicings/ Cycle 7: C melodic minor--Also acceptable

Root Position

Cmi B^o A^o G F E^baug Dmi Cmi

4

First Inversion

Cmi B^o A^o G F E^baug Dmi Cmi

5

Second Inversion

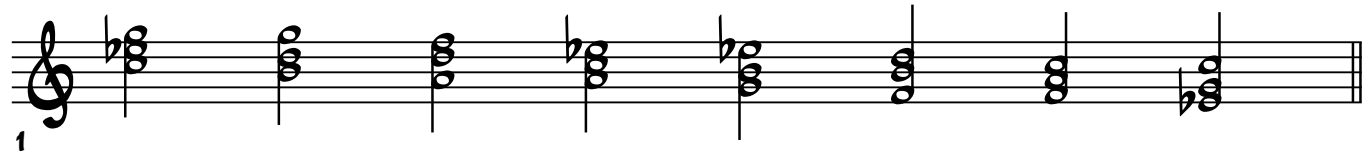
Cmi B^o A^o G F E^baug Dmi Cmi

6

Triad/Close Voicings/ Cycle 5: C melodic minor

Root Position

Cmi G Dmi Ao Ebaug Bo F Cmi



First Inversion

Cmi G Dmi Ao Ebaug Bo F Cmi



Second Inversion

Cmi G Dmi Ao Ebaug Bo F Cmi



Triad/Spread Voicings/ Cycle 5: C melodic minor

Root Position

Cmi G Dmi Ao Ebaug Bo F Cmi



First Inversion

Cmi G Dmi Ao Ebaug Bo F Cmi



Second Inversion

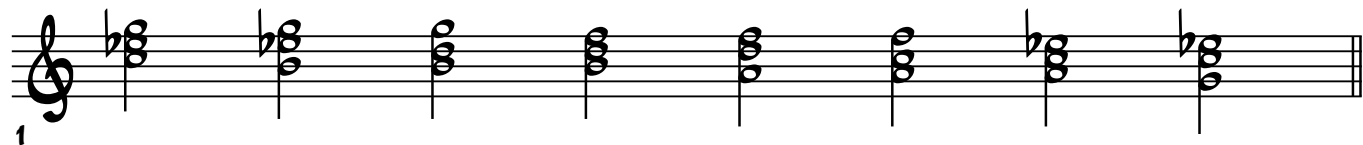
Cmi G Dmi Ao Ebaug Bo F Cmi



Triad/Close Voicings/ Cycle 3: C melodic minor

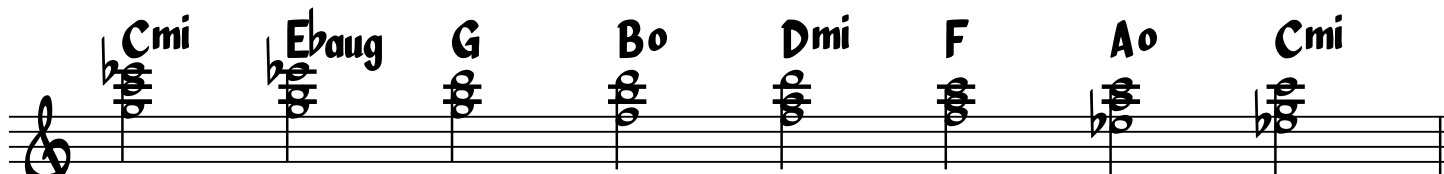
Root Position

Cmi Eb aug G B^o Dmi F A^o Cmi



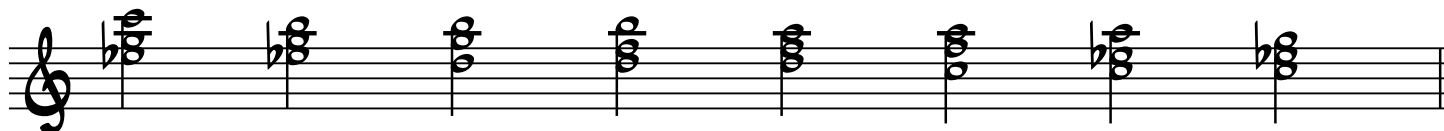
Second Inversion

Cmi Eb aug G B^o Dmi F A^o Cmi



First Inversion

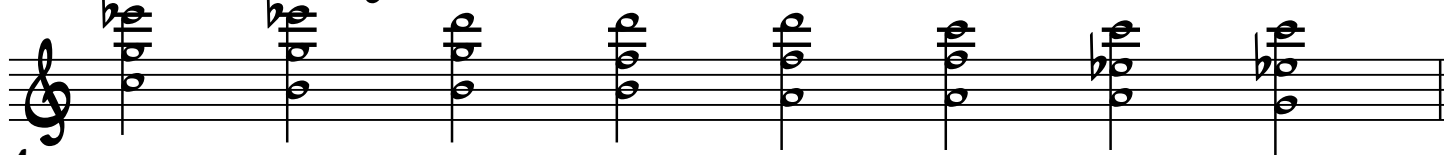
Cmi Eb aug G B^o Dmi F A^o Cmi



Triad/Spread Voicings/ Cycle 3: C melodic minor

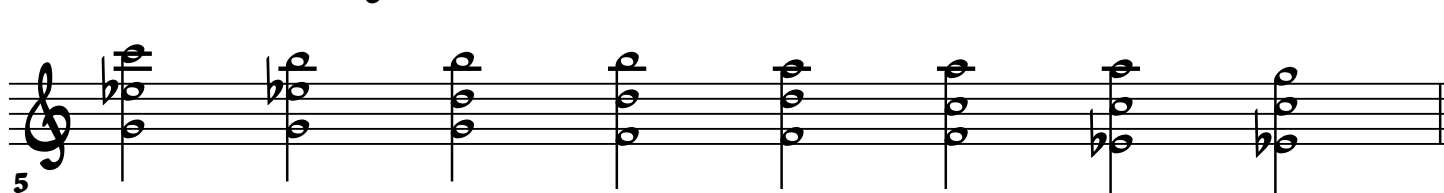
Root Position

Cmi Eb aug G B^o Dmi F A^o Cmi



Second Inversion

Cmi Eb aug G B^o Dmi F A^o Cmi



First Inversion

Cmi Eb aug G B^o Dmi F A^o Cmi



Triad/Close Voicings/ Cycle 2: C harmonic minor

Root Position

Cmi Do Ebaug Fmi G Ab Bo Cmi

1

Second Inversion

Cmi Do Ebaug Fmi G Ab Bo Cmi

2

First Inversion

Cmi Do Ebaug Fmi G Ab Bo Cmi

3

Triad/Open Voicings/ Cycle 2: C harmonic minor

Root Position

Cmi Do Ebaug Fmi G Ab Bo Cmi

4

Second Inversion

Cmi Do Ebaug Fmi G Ab Bo Cmi

5

First Inversion

Cmi Do Ebaug Fmi G Ab Bo Cmi

6

Triad/Close Voicings/ Cycle 2: C harmonic minor--Also acceptable

Root Position

Cmi Do Eaug Fmi G Ab Bo Cmi

1

Second Inversion

Cmi Do Eaug Fmi G Ab Bo Cmi

2

First Inversion

Cmi Do Eaug Fmi G Ab Bo Cmi

3

Triad/Spread Voicings/ Cycle 2: C harmonic minor--Also acceptable

Root Position

Cmi Do Eaug Fmi G Ab Bo Cmi

4

Second Inversion

Cmi Do Eaug Fmi G Ab Bo Cmi

5

First Inversion

Cmi Do Eaug Fmi G Ab Bo Cmi

6

Triad/Close Voicings/ Cycle 4: C harmonic minor

Root Position

Cmi Fmi Bo Ebaug Ab Do G Cmi

Second Inversion

Cmi Fmi Bo Ebaug Ab Do G Cmi

First Inversion

Cmi Fmi Bo Ebaug Ab Do G Cmi

Triad/Spread Voicings/ Cycle 4: C harmonic minor

Root Position

Cmi Fmi Bo Ebaug Ab Do G Cmi

Second Inversion

Cmi Fmi Bo Ebaug Ab Do G Cmi

First Inversion

Cmi Fmi Bo Ebaug Ab Do G Cmi

Triad/Close Voicings/ Cycle 6: C harmonic minor

Root Position

Cmi Ab Fmi Do Bo G Ebaug Cmi

1

First Inversion

Cmi Ab Fmi Do Bo G Ebaug Cmi

2

Second Inversion

Cmi Ab Fmi Do Bo G Ebaug Cmi

3

Triad/Spread Voicings/ Cycle 6: C harmonic minor

Root Position

Cmi Ab Fmi Do Bo G Ebaug Cmi

4

First Inversion

Cmi Ab Fmi Do Bo G Ebaug Cmi

5

Second Inversion

Cmi Ab Fmi Do Bo G Ebaug Cmi

6

Triad/Close Voicings/ Cycle 7: C harmonic minor

Root Position

Cmi B^o A^b G Fmi E^baug D^o Cmi

First Inversion

Cmi B^o A^b G Fmi E^baug D^o Cmi

Second Inversion

Cmi B^o A^b G Fmi E^baug D^o Cmi

Root Position

Triad/Spread Voicings/ Cycle 7: C harmonic minor

Cmi B^o A^b G Fmi E^baug D^o Cmi

First Inversion

Cmi B^o A^b G Fmi E^baug D^o Cmi

Second Inversion

Cmi B^o A^b G Fmi E^baug D^o Cmi

Triad/Close Voicings/ Cycle 7: C harmonic minor--Also acceptable

Root Position

Cmi Bo Ab G Fmi Ebaug Do Cmi

1

First Inversion

Cmi Bo Ab G Fmi Ebaug Do Cmi

2

Second Inversion

Cmi Bo Ab G Fmi Ebaug Do Cmi

3

Triad/Spread Voicings/ Cycle 7: C harmonic minor--Also acceptable

Root Position

Cmi Bo Ab G Fmi Ebaug Do Cmi

4

First Inversion

Cmi Bo Ab G Fmi Ebaug Do Cmi

5

Second Inversion

Cmi Bo Ab G Fmi Ebaug Do Cmi

6

Triad/Close Voicings/ Cycle 5: C harmonic minor

Root Position

Cmi G Do Ab Eaug Bo Fmi Cmi

First Inversion

Cmi G Do Ab Eaug Bo Fmi Cmi

Second Inversion

Cmi G Do Ab Eaug Bo Fmi Cmi

Triad/Spread Voicings/ Cycle 5: C harmonic minor

Root Position

Cmi G Do Ab Eaug Bo Fmi Cmi

First Inversion

Cmi G Do Ab Eaug Bo Fmi Cmi

Second Inversion

Cmi G Do Ab Eaug Bo Fmi Cmi

Triad/Close Voicings/ Cycle 3: C harmonic minor

Root Position

Cmi Ebaug G Bo Do Fmi Ab Cmi

1

Second Inversion

Cmi Ebaug G Bo Do Fmi Ab Cmi

2

First Inversion

Cmi Ebaug G Bo Do Fmi Ab Cmi

3

Triad/Spread Voicings/ Cycle 3: C harmonic minor

Root Position

Cmi Ebaug G Bo Do Fmi Ab Cmi

4

Second Inversion

Cmi Ebaug G Bo Do Fmi Ab Cmi

5

First Inversion

Cmi Ebaug G Bo Do Fmi Ab Cmi

6

Triad Rows for Level 8 Final Exam Practice

Play in close position and then open position. Play also in retrograde (backwards)

1. II: C F- B+ Eo A D- G+ Co F B- E+ Ao D G- C+ Fo B E- A+ Do G C-
F+ Bo E A- D+ Go :||
2. II: C Go D+ A- E Bo F+ C- G Do A+ E- B Fo C+ G- D Ao E+ B- F Co
G+ D- A Eo B+ F- :||
3. II: C D- E+ Fo G A- B+ Co D E- F+ Go A B- C+ Do E F- G+ Ao B C-
D+ Eo F G- A+ Bo :||
4. II: C Bo A+ G- F Eo D+ C- B Ao G+ F- E Do C+ B- A Go F+ E- D Co
B+ A- G Fo E+ D- :||
5. II: C A- F+ Do B G- E+ Co A F- D+ Bo G E- C+ Ao F D- B+ Go E C-
A+ Fo D B- G+ Eo :||
6. II: C Eo G+ B- D Fo A+ C- E Go B+ D- F Ao C+ E- G Bo D+ F- A Co
E+ G- B Do F+ A- :||
7. II: Gb Ab- Bb+ Dbo Eb Gb- Ab+ Bbo Db Eb- Gb+ Abo Bb Db- Eb+
Gbo Ab Bb- Db+ Ebo :||
8. II: Gb Bb- Eb+ Abo Db Gb- Bb+ Ebo Ab Db- Gb+ Bbo Eb Ab- Db+
Gbo Bb Eb- Ab+ Dbo :||
9. II: Gb Db- Ab+ Ebo Bb Gb- Db+ Abo Eb Bb- Gb+ Dbo Ab Eb- Bb+
Gbo Db Ab- Eb+ Bbo :||
10. II: Gb Ebo Db+ Bb- Ab Gbo Eb+ Db- Bb Abo Gb+ Eb- Db Bbo Ab+
Gb- Eb Dbo Bb+ Ab- :||
11. II: Gb Dbo Ab+ Eb- Bb Gbo Db+ Ab- Eb Bbo Gb+ Db- Ab Ebo Bb+
Gb- Db Abo Eb+ Bb- :||
12. II: Gb Bbo Eb+ Ab- Db Gbo Bb+ Eb- Ab Dbo Gb+ Bb- Eb Abo Db+
Gb- Bb Ebo Ab+ Db- :||

Close/Cycle 2/Root

Down/no common
tones

Close/Cycle 2/1st
inversion

Down/no common
tones

Close/Cycle 2/2nd
inversion

Down/no common
tones

Close/Cycle 7/Root

Up/no common tones

Close/Cycle 7/1st
inversion

Up/no common tones

Close/Cycle 7/2nd
inversion

Up/no common tones

Close/Cycle 3/Root

Down/ 2 common
tones

Close/Cycle 3/1st
inversion

Down/ 2 common
tones

Close/Cycle 3/2nd
inversion

Down/ 2 common
tones

Close/Cycle 6/Root

Up/2 common tones

Close/Cycle 6/1st
inversion

Up/2 common tones

Close/Cycle 6/2nd
inversion

Up/2 common tones

Close/Cycle 4/Root

Up/1 common tone

Close/Cycle 4/1st
inversion

Up/1 common tone

Close/Cycle 4/2nd
inversion

Up/1 common tone

Close/Cycle 5/Root

Down/1 common tone

Close/Cycle 5/1st
inversion

Down/1 common tone

Close/Cycle 5/2nd
inversion

Down/1 common tone

Spread/Cycle 2/Root

Down/no common
tones

Spread/Cycle 2/1st
inversion

Down/no common
tones

Spread/Cycle 2/2nd
inversion

Down/no common
tones

Spread/Cycle 7/Root

Up/no common tones

Spread/Cycle 7/1st
inversion

Up/no common tones

Spread/Cycle 7/2nd
inversion

Up/no common tones

Spread/Cycle 3/Root

Down/ 2 common
tones

Spread/Cycle 3/1st
inversion

Down/ 2 common
tones

Spread/Cycle 3/2nd
inversion

Down/ 2 common
tones

Spread/Cycle 6/Root

Up/2 common tones

Spread/Cycle 6/1st
inversion

Up/2 common tones

Spread/Cycle 6/2nd
inversion

Up/2 common tones

Spread/Cycle 4/Root

Up/1 common tone

Spread/Cycle 4/1st
inversion

Up/1 common tone

Spread/Cycle 4/2nd
inversion

Up/1 common tone

Spread/Cycle 5/Root

Down/1 common tone

Spread/Cycle 5/1st
inversion

Down/1 common tone

**Spread/Cycle 5/2nd
inversion**

Down/1 common tone